

Product Installation Guidelines

Version 1, 4 November 2022, Page 1 of 5

Ezy-Push® CP-BS Push Button Foot Valve 60° Mount, Spout & Connection Kit

PRODUCT CODE:

- 361444K



SPECIFICATIONS

- Heavy duty vandal resistant push activated pedal and mounting plate.
- The taps are made of chrome plated brass.
- Clean hygienic design.
- Water and energy saving.
- Handsfree self-closing valve.

IMPORTANT: All Ezy-Push taps are tested in accordance with AS/NZS 3718 and leave our premises in good working order. Time may vary due to changes in temperature, pressure, flow rate and water quantity.

TECHNICAL DATA

Inlet	½" BSP - Female	
Outlet	Aerator	
Headwork	Push Button	
Working Pressure Range (kPa)	Min	100
	Max	500
Working Temperature Range (°C)	Min	5
	Max	60
Nominal Flow Rate (LPM)	5.4	
Finish	Chrome	

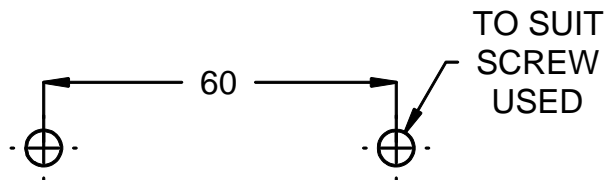
NOTE: Galvin Engineering continually strive to improve their products. Specifications may change without notice.

TOOLS REQUIRED

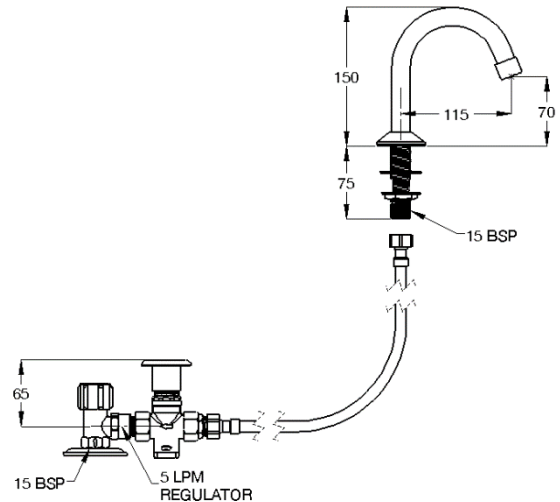
- Spanner or adjustable crescent
- Screw driver
- Power Drill

PRE-INSTALLATION - MOUNTING DETAILS

- Notes:** 1.) If the mounting holes do not already exist, mark out and drill the holes, as shown in mounting details.
2.) Before installation, all lines must be flushed. We recommend that a line strainer be installed prior to taps to eliminate any foreign material.

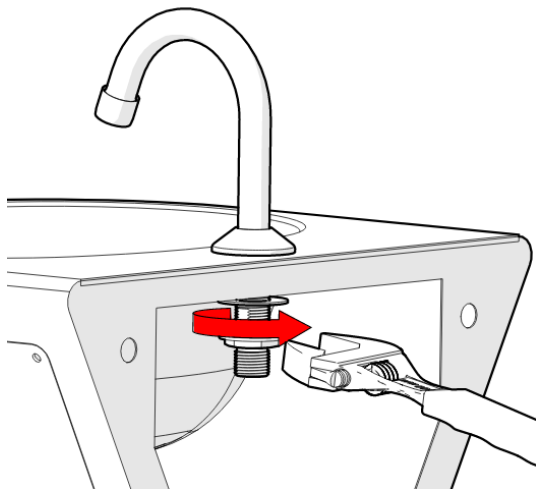


MOUNTING DETAILS



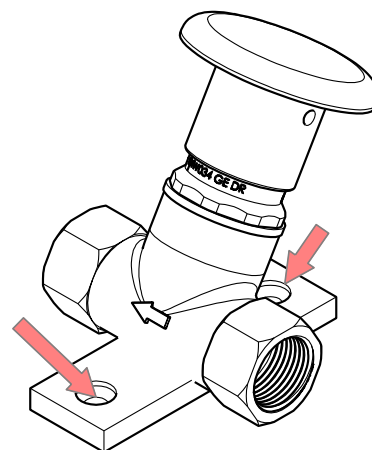
INSTALLATION

INSTALLATION COMPLIANCE: Galvin Engineering products must be installed in accordance with these installation instructions and in accordance with AS/NZS 3500, the PCA and your local regulatory requirements. Water and/or electrical supply conditions must also comply to the applicable national and/or state standards. Failing to comply with these provisions shall void the product warranty and may affect the performance of the product.



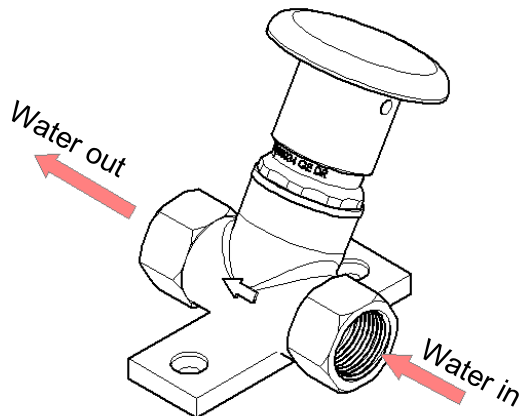
1. Gooseneck fitting

- Fit the Gooseneck body onto the basin.
- Fit the rubber washer then back nut and tighten.



2. Mounting foot valve

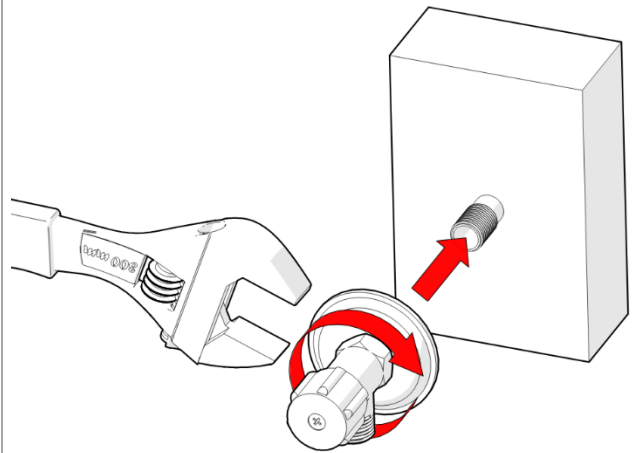
- Mount the foot valve body as per mounting details.
- Secure the foot valve with suitable screws (not supplied).



3. Water connection

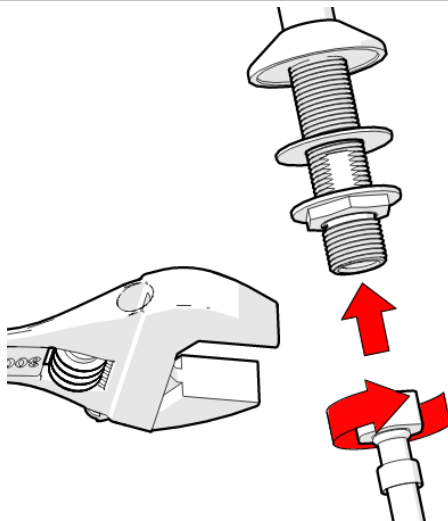
- When applying thread tape or sealant to the inlet, ensure the opening is not obscured.
- Fit water connections as shown ensuring the water flow follows the indicator marked on the valve body.

Note: Never operate without flow restrictor, as Ezy-Push Foot Valve will deliver full mains pressure with unrestricted flow



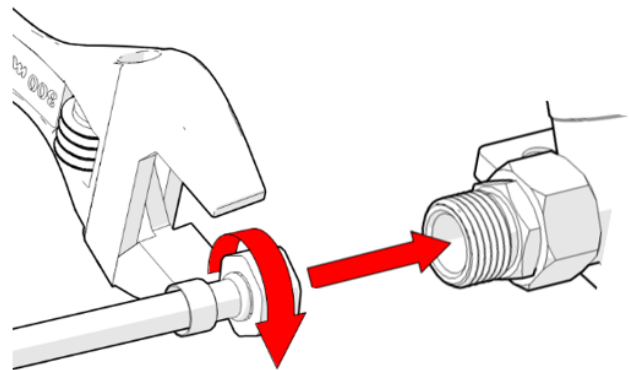
4. Mounting Cistern Tap

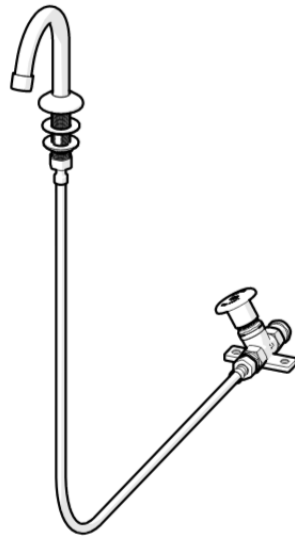
- Two cistern taps are supplied for installations requiring mixed temperature water.
- Fit cistern tap as shown
- When applying thread tape or sealant to the inlet, ensure the opening is not obscured.



5. Connecting the hose

- Fit hose to gooseneck and foot valve as shown. Ensure correct flow direction (direction of flow indicated by arrow on body).
- When applying thread tape or sealant to the inlet, ensure the opening is not obscured.





7. Test unit

- Turn on the water supply, inspect the tap and check for any leaks.
- Check for correct operation.

TROUBLESHOOTING

PROBLEM	CAUSE	RECTIFICATION
Water is not flowing from tap	Mains supply is turned off	Turn on mains supply.
	Blocked flow restrictor	Remove restrictor and clean
Rate of flow inadequate.	The flow restrictor may not be performing satisfactory due to inadequate supply pressure.	Remove flow restrictor and replace with a flow restrictor of different capacity to suit (available from Galvin Specialised).
Button hard to press	The mains pressure may be too great	Reduce to below 500 kPa (70 PSI). Regrease spindle if required.
Inconsistent flow	Blocked top assembly	Remove top assembly and clean

WARRANTY

The warranty set forth herein is given expressly and is the only warranty given by the Galvin Engineering Pty Ltd. With respect to the product, Galvin Engineering Pty Ltd makes no other warranties, express or implied. Galvin Engineering Pty. Ltd. hereby specifically disclaims all other warranties, express or implied, including but not limited to the implied warranties of merchantability and fitness for a particular purpose.

Galvin Engineering Pty Ltd products are covered under our manufacturer's warranty available for download from www.galvinengineering.com.au. Galvin Engineering Pty Ltd expressly warrants that the product is free from operational defects in workmanship and materials for the warranty period as shown on the schedule in the manufacturer's warranty. During the warranty period, Galvin Engineering will replace or repair any defective products manufactured by Galvin Engineering without charge, so long as the terms of the Manufacturer's warranty are complied with.

The remedy described in the first paragraph of this warranty shall constitute the sole and exclusive remedy for breach of warranty, and Galvin Engineering Pty Ltd shall not be responsible for any incidental, special or consequential damages, including without limitation, lost profits or the cost of repairing or replacing other property which is damaged if this product does not work properly, other costs resulting from labour charges, delays, vandalism, negligence, fouling caused by foreign material, damage from adverse water conditions, chemical, electrical or any other circumstances over which Galvin Engineering has no control. This warranty shall be invalidated by any abuse, misuse, misapplication, improper installation or improper maintenance or alteration of the product.

Within Australia: **1300 514 074** Outside Australia: P: **+61 (0)8 9338 2344**

F: **+61 (0)8 9338 2340**

sales@galvinengineering.com.au

www.galvinengineering.com.au

ABN: 78 008 719 382

PERTH | SYDNEY | MELBOURNE | BRISBANE | ADELAIDE

